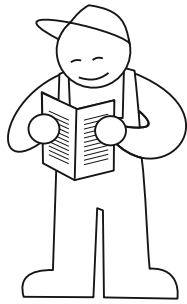
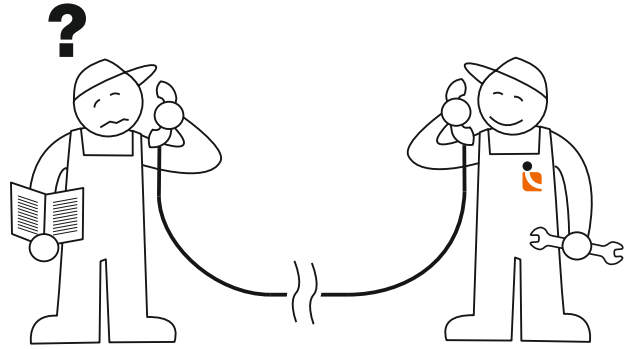




0

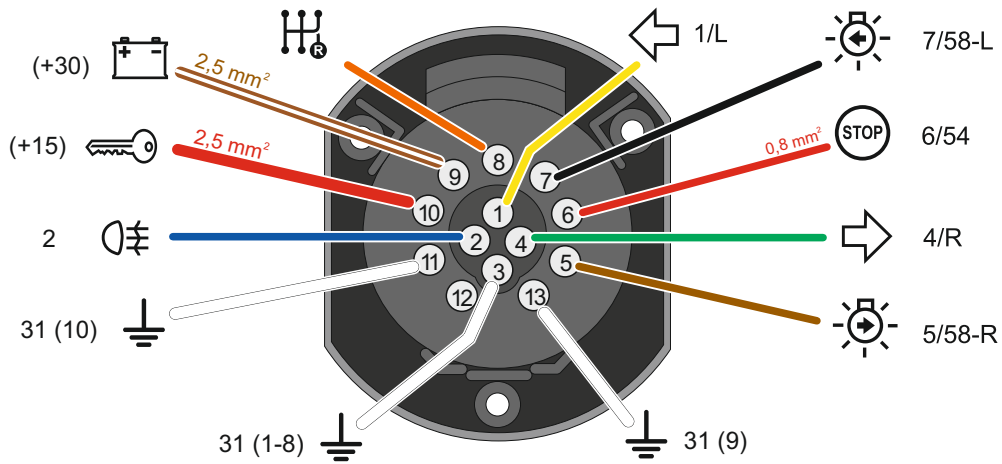


5 min.

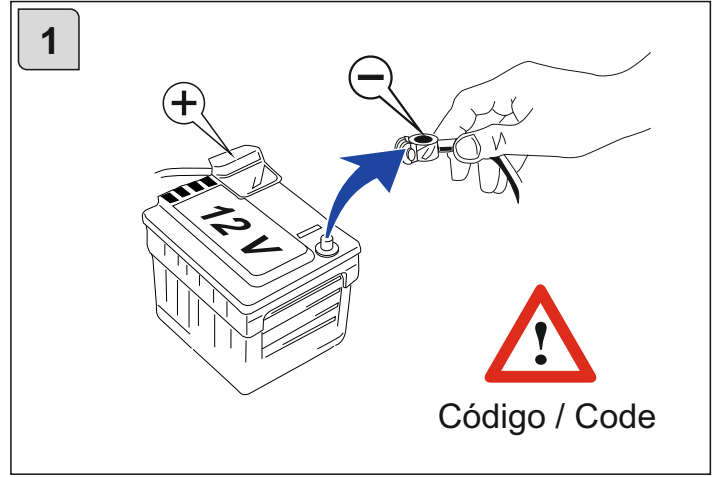
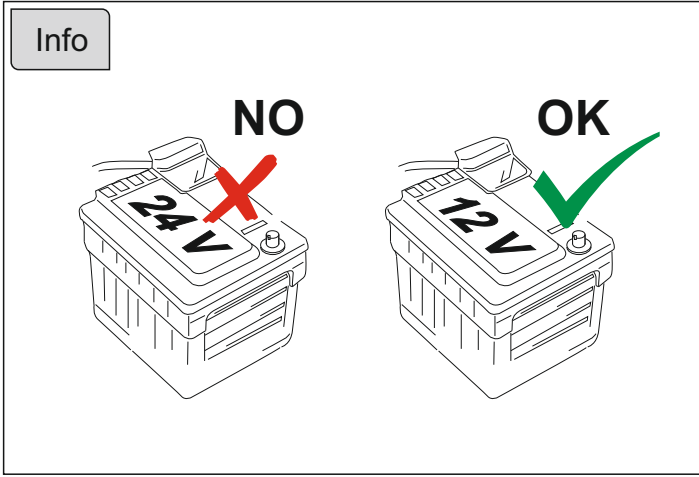


Tel.: (+34) 976 457 130

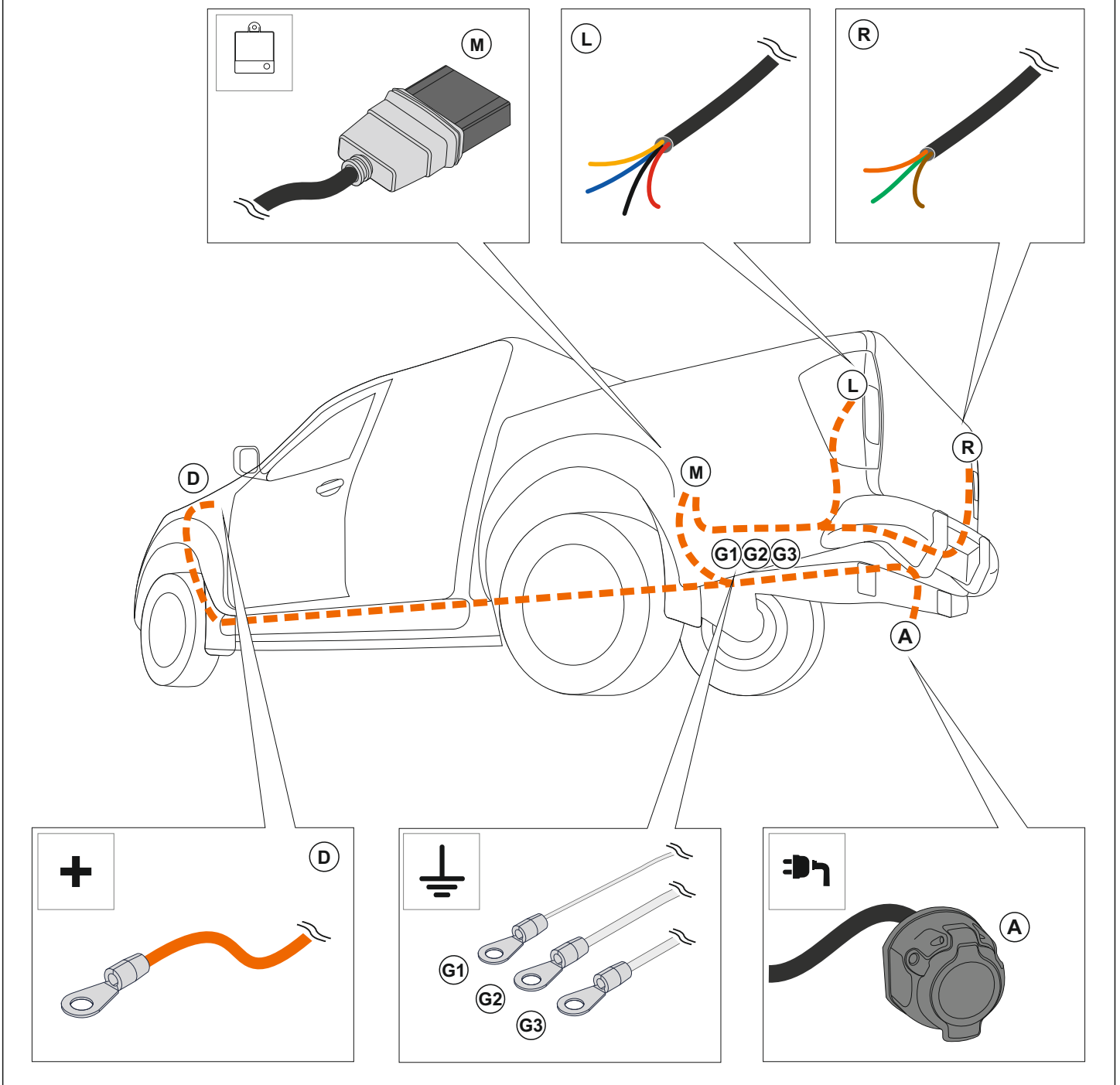
Conexión de la base / Socket connection / Connection de la prise / Connessione de la presa / Belegung der Steckdose / Conexión de la base



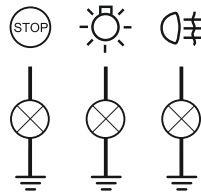
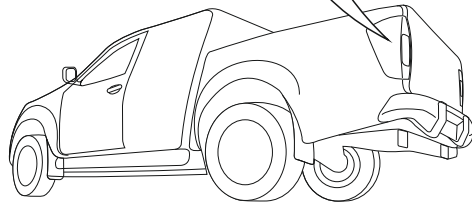
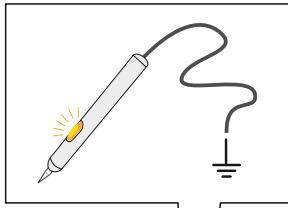
DIN / ISO 11446	ES	GB	FR	IT	DE	PT
1 ↵ 1/L	Intermitente izquierdo	Left indicator	Clignotant gauche	Freccia sinistra	Fahrtrichtungs-anzeiger links	Vira à esquerda
2 ☹ 2	antiniebla trasera	rear fog light	Anti-brouillard	Retro-nebbia	Nebelschlussleuchte	Nevoeiro traseira
3 ⚡ 31 (1-8)	Masa (1-8)	Earth (1-8)	Masse (1-8)	Massa (1-8)	Masse (1-8)	Terra (1-8)
4 ➡ 4/R	Intermitente derecho	Right indicator	Clignotant droit	Freccia destra	Fahrtrichtungs-anzeiger rechts	Vira à direita
5 ☼ 5/58R	Posición derecha	Right tail light	Veilleuse droite	Posizione destra	Rechte Schlussleuchte	Luz traseira direita
6 Ⓢ 6/54	Luz de freno	Brake light	Feu de stop	Luce d'arresto	Brem-sleuchte	Luz de freio
7 ☼ 7/58L	Posición izquierda	Left tail light	Veilleuse gauche	Posizione sinistra	Linke Schlussleuchte	Luz traseira esquerda
8 ⚙ 8	Marcha atrás	Reverse light	Marche arrière	Retro-marcia	Rückfahr-leuchte	Luz Reversa
9 🔋 +30	Corriente continua	Permanent current	Courant continue	Positivo permanente	Permanent-strom	Corrente constante
10 🔑 +15	Corriente de contacto	Contact current	Courant de contact	Positivo sottochiave	Schalter-strom	Corrente em chave
11 ⚡ 31 (10)	Masa (10)	Earth (10)	Masse (10)	Massa (10)	Masse (10)	Terra (10)
12 ∅ --	Pin vacío	Empty pin	Broche vide	Pin vuoto	Leere Kammer	Pino vazio
13 ⚡ 31 (9)	Masa (9)	Earth (9)	Masse (9)	Massa (9)	Masse (9)	Terra (9)



2 **Guiado del cable / Harness routing**

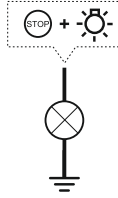


3



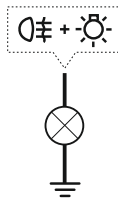
4

Estándar / Standard



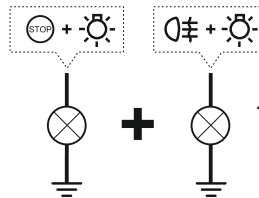
5

PWM - +



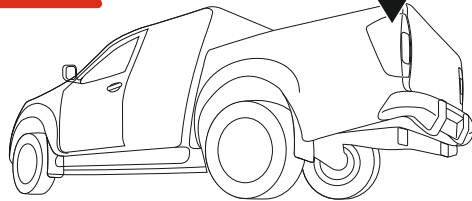
6

PWM - +



7

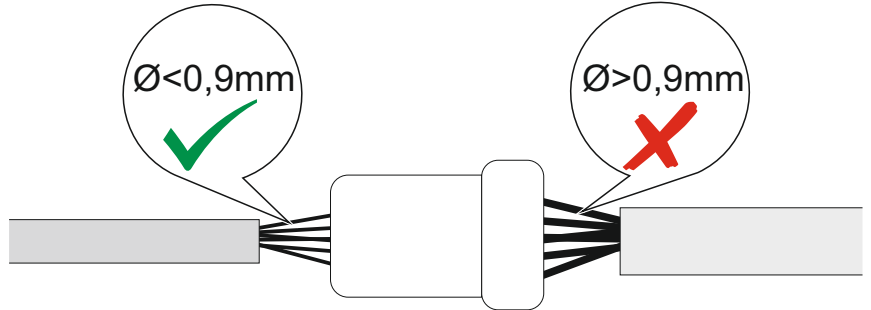
PWM - + & - +



$\varnothing < 0,9\text{mm}$

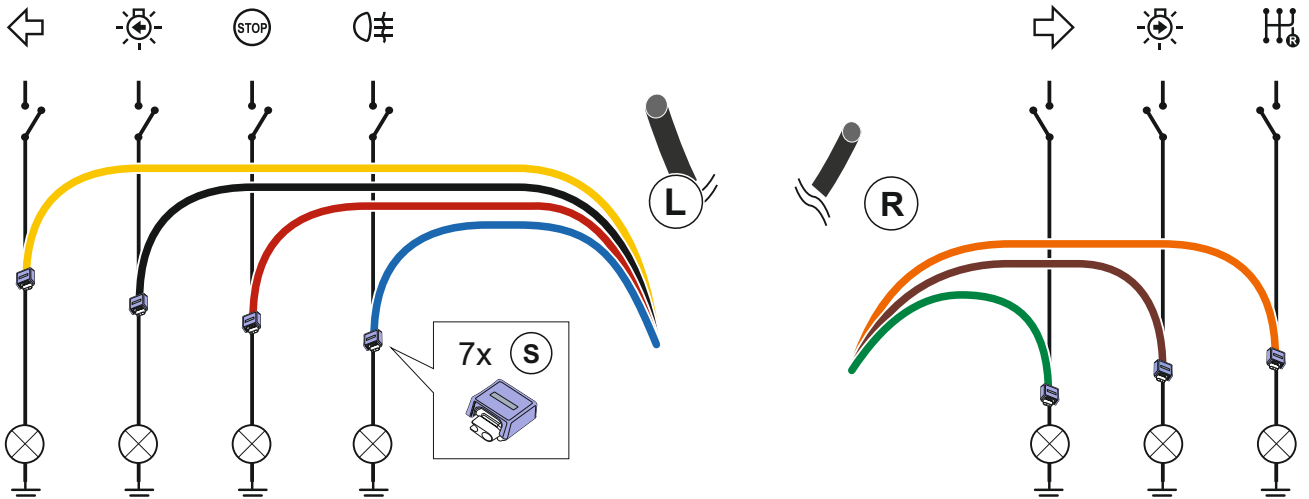


$\varnothing > 0,9\text{mm}$

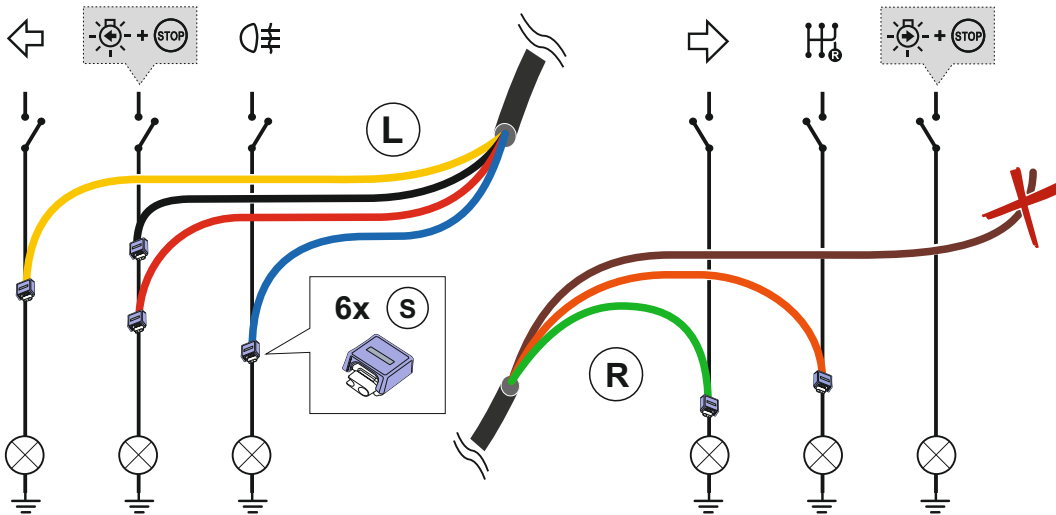


4

Conexión estándar / Standard connection



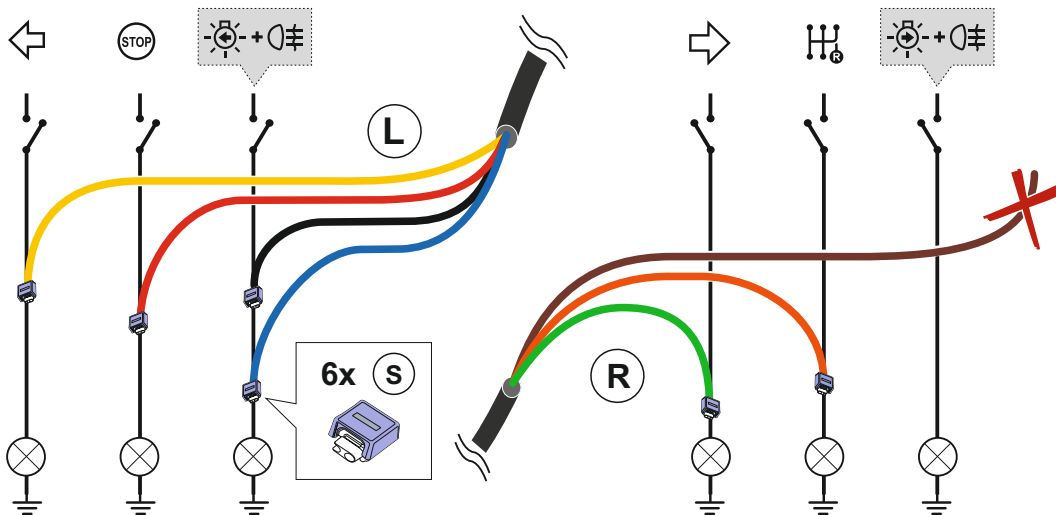
**5** PWM: Luces de freno y posición / PWM: Stop & Tail light



**Autoprogramación de centralita**  
Module software autocoding

- 1
- 2

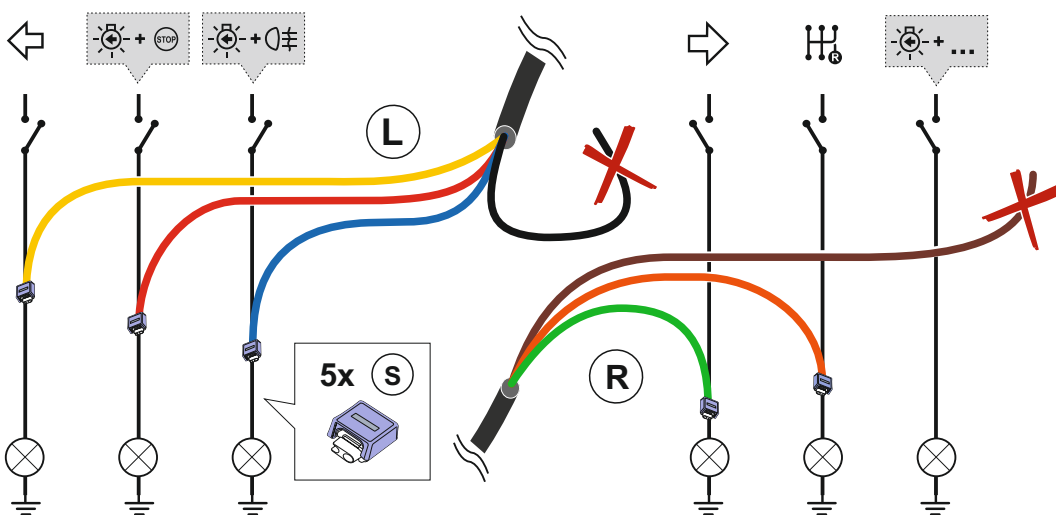
**6** PWM: Luces antiniebla y posición / PWM: Fog & Tail lights



**Autoprogramación de centralita**  
Module software autocoding

- 1
- 2

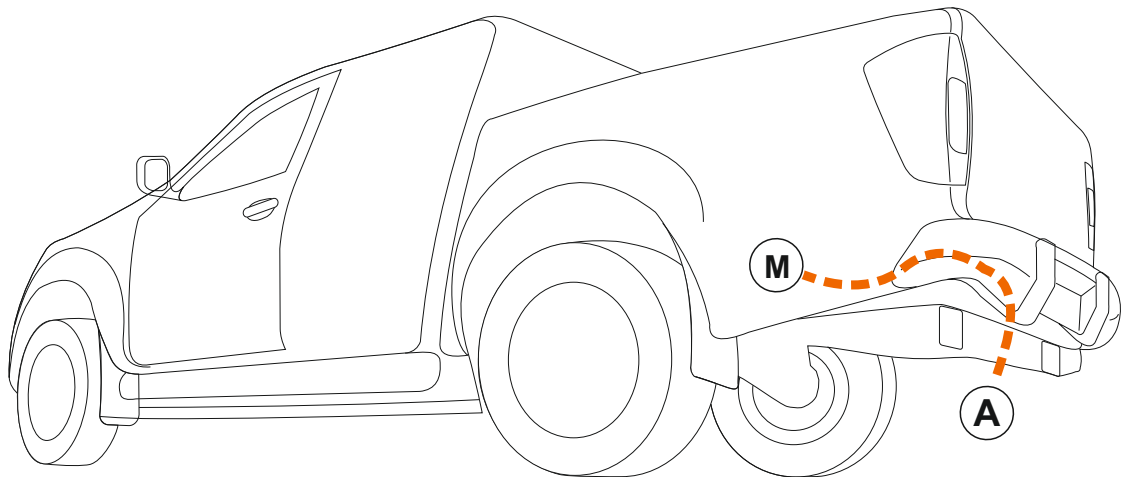
**7** PWM: Luces antiniebla, freno y posición / PWM: Fog, Brake & Tail lights



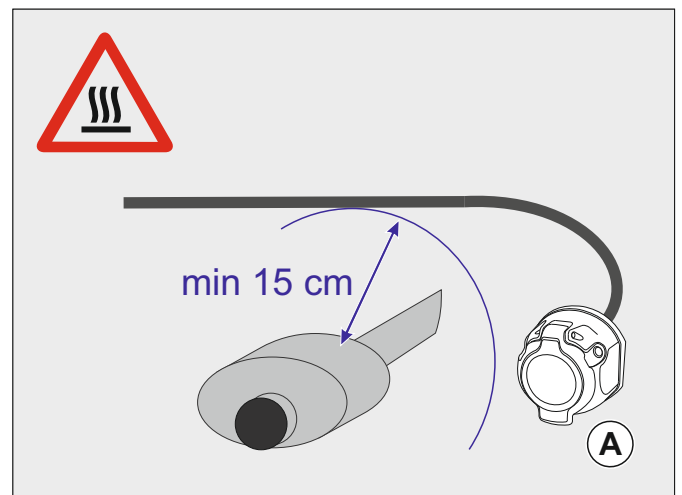
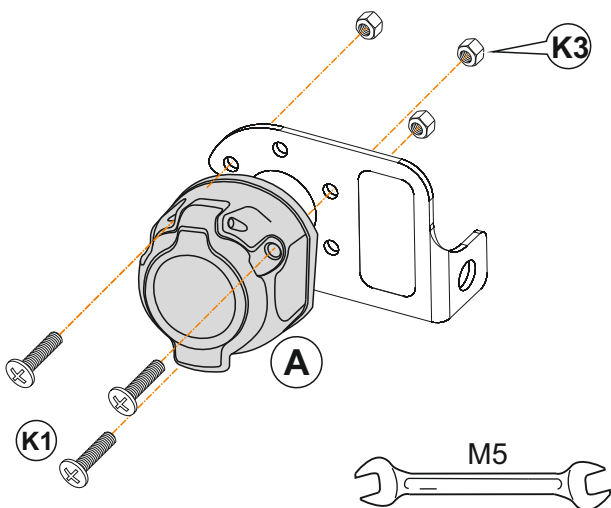
**Autoprogramación de centralita**  
Module software autocoding

- 1
- 2
- 3

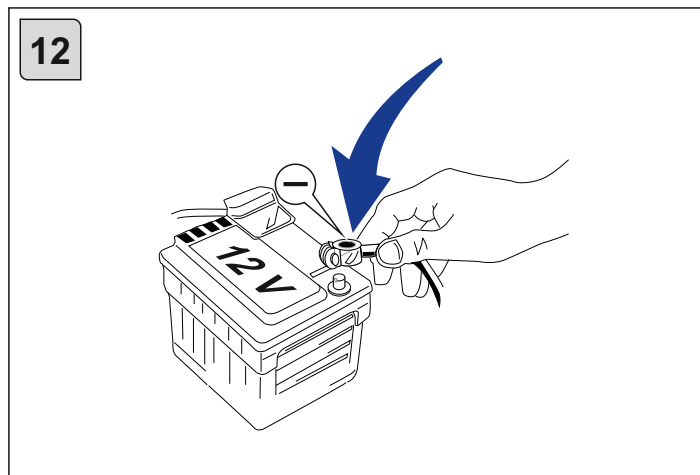
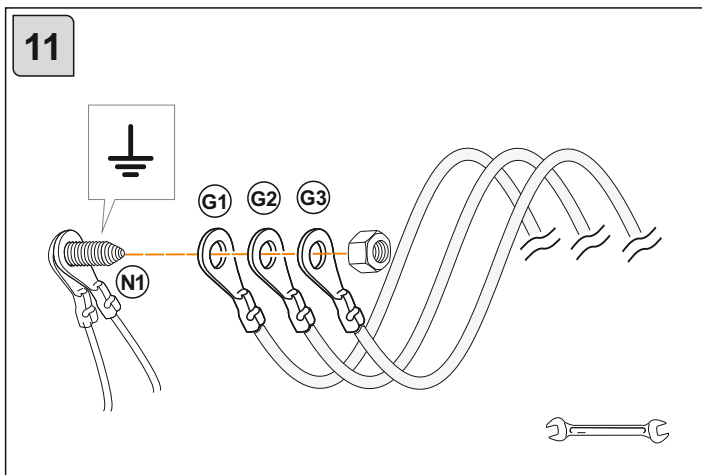
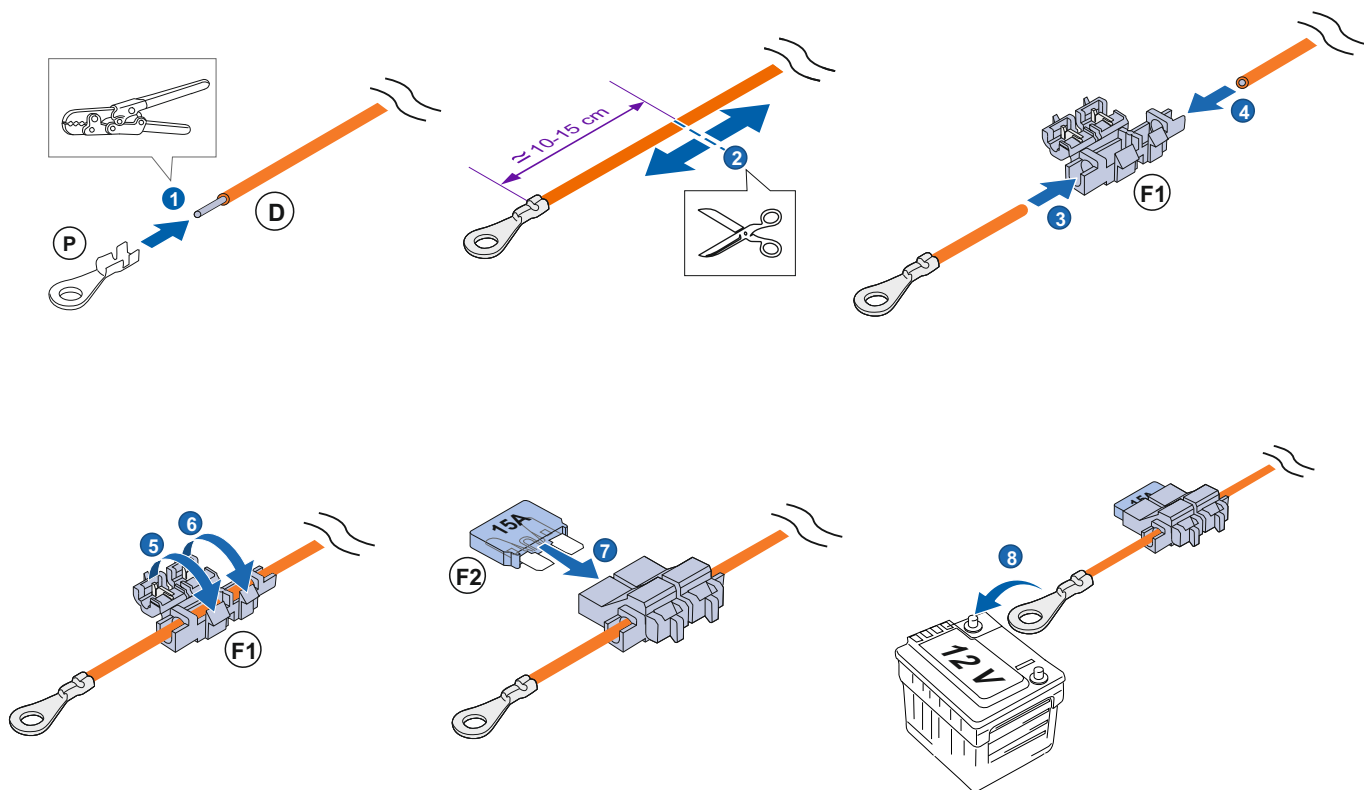
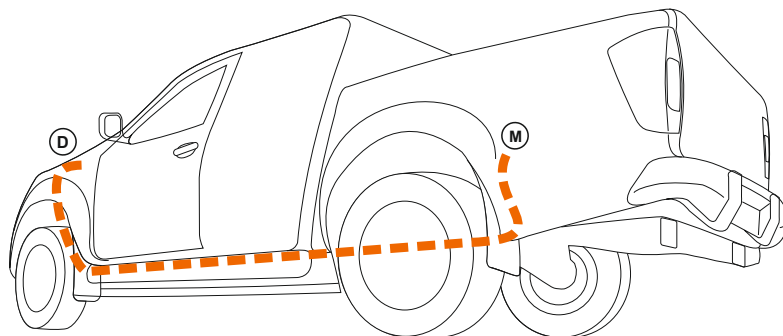
**8** Fijación de la centralita / Fixation of the trailer module



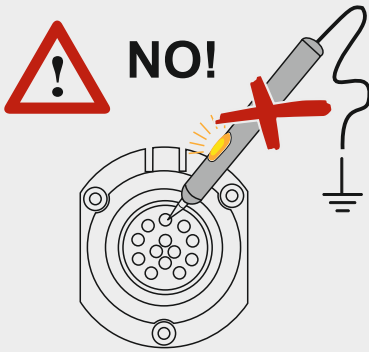
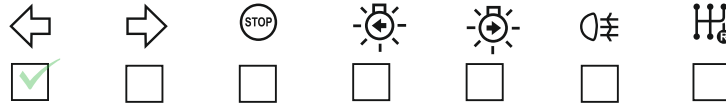
**9** Fijación de la base de enchufe de 13 polos / Fixation of the 13 pins socket



**10** Alimentación de la centralita / Constant current for the trailer module



13 Comprobación de alumbrado / Lightning check

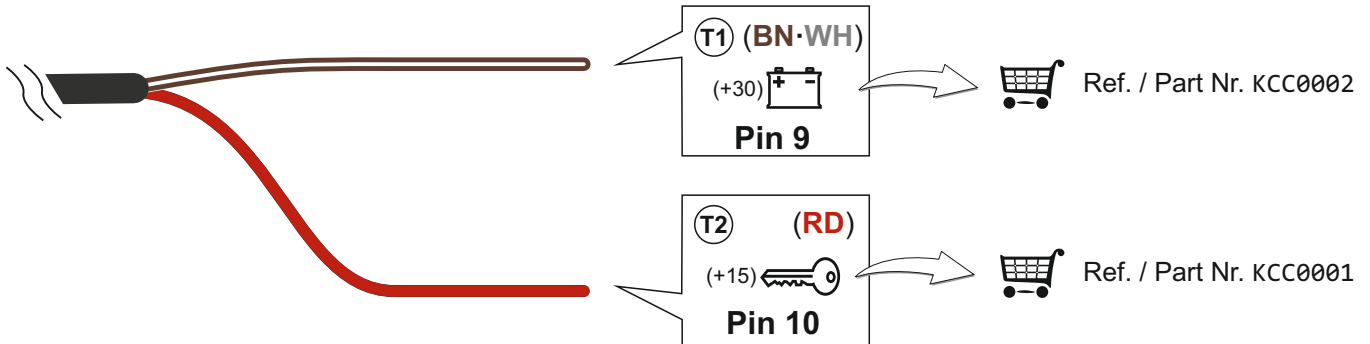


Comprobador Profesional ATT / ATT Professional Tester



Ref. / Part Nr. ALV0C51

14 Opcional: tomas de caravana / Optional: caravan power supply



15 Funciones extra / Extra functions

